

Need a Mortgage in principle
to make offers? Call us now
for quick assistance!
0121 775 0101



Do you need to sell?
Start your journey now!
Call us we can help.
01564 777 314



SCAN FOR MORE INFO
SIZE - 1343 Sq Ft
TENURE - Freehold
COUNCIL TAX - Solihull Metropolitan Borough Council - E
BROADBAND - Upload Max 1000Mbps
Download Max 1000Mbps
MOBILE - O2
EPC - C
PARKING -
FLOODRISK - Very Low
SERVICES - Mains
COVENANTS - N/A

Are you an investor
interested in expanding your
portfolio?

**Call 01564 777 314 to provide your
investment criteria for alerts.**

27 Ullenhall Road Knowle, B93

Nestled on Ullenhall Road in the charming village of Knowle, this tastefully presented semi-detached family home combines classic charm with modern conveniences, making it a wonderful opportunity for those looking to settle in a sought-after area. The property has been thoughtfully extended and is perfect for families seeking both space and style.

FEATURES

- Beautifully Presented and Extended Family Home
- Bright and Spacious Lounge
- Stunning Kitchen/Dining/Family Room
- Separate Utility Room
- Principal Bedroom with Walk in Wardrobe
- Two Further Double Bedrooms and Two Singles
- Modern Family Bathroom
- Driveway Parking for Up to 3 Vehicles
- Pleasant Rear Garden
- Convenient Location



SCAN TO **VIEW OUR
WEEKLY FILMS &
SUBSCRIBE**



Sneak Peeks

Every week, we unveil "Sneak Peeks," a feature showcasing exclusive properties before they hit Rightmove and other platforms.



The Landlord Club

Join our Landlord Club for weekly updates on legislation, market trends, and our Letting Director's 'Investment Pick of the Week' for optimal ROI.



HTSPMD

Tune into 'How's The Solihull Property Market Dom' weekly for a quick, insightful snapshot of the market.

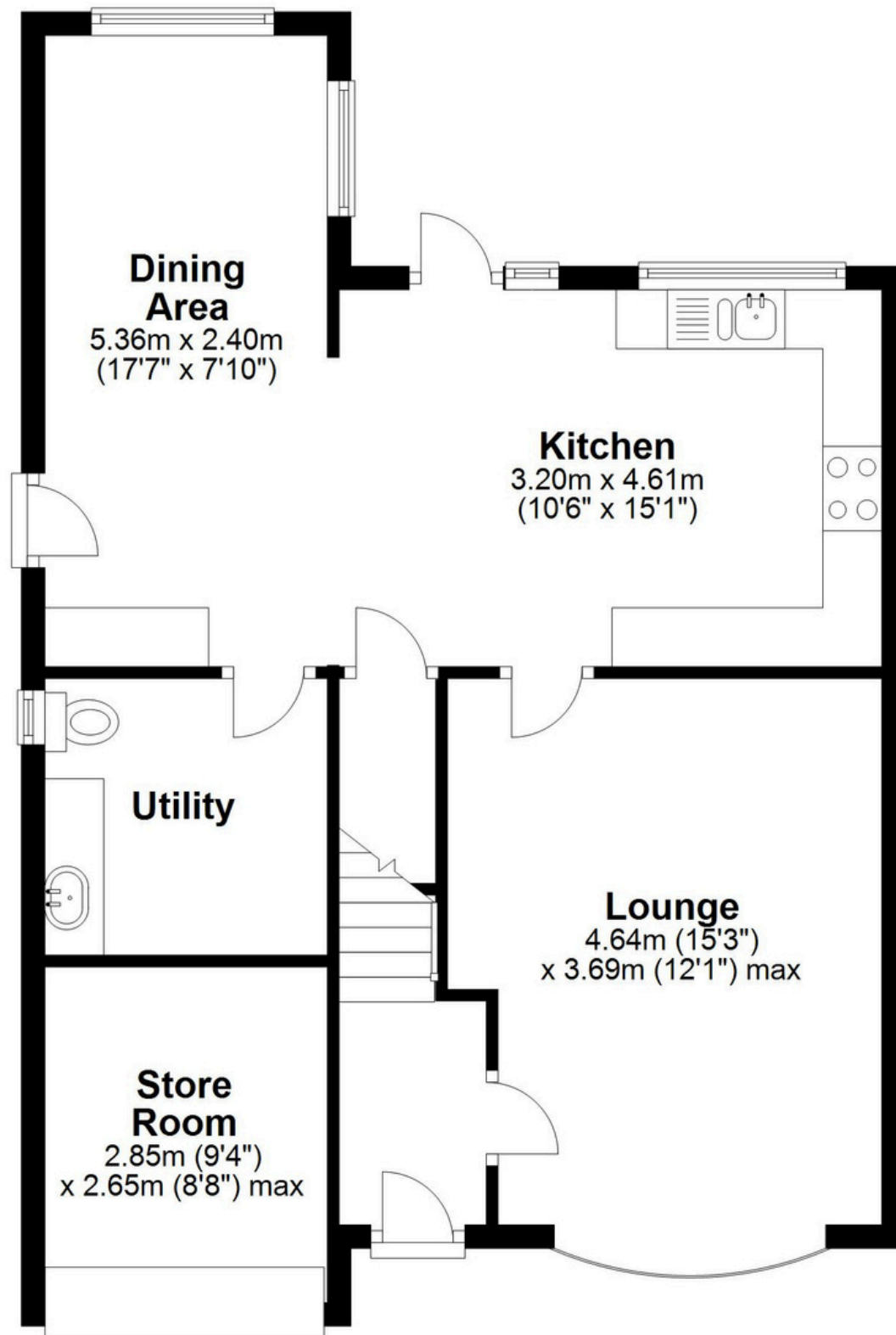


The Mortgage Update

Get weekly insights and the best deals with our Mortgage Update, your shortcut to navigating the complex mortgage landscape confidently.

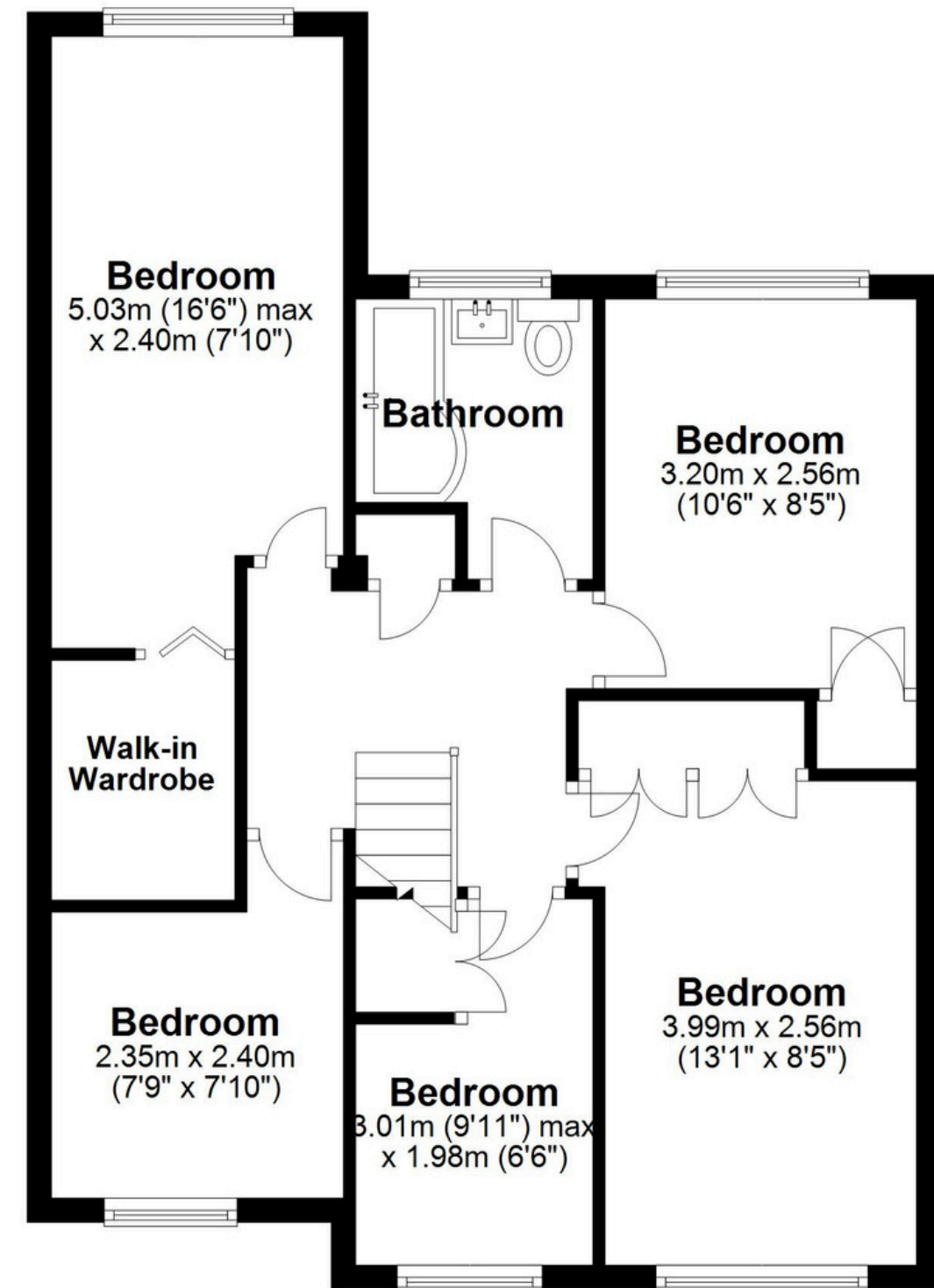
Ground Floor

Approx. 64.2 sq. metres (691.2 sq. feet)



First Floor

Approx. 60.6 sq. metres (652.7 sq. feet)



Total area: approx. 124.8 sq. metres (1343.8 sq. feet)

This floor plan is for illustration purposes only, this is not intended to be a measured/scaled survey or comply with RICS guidelines. All measurements (including total floor area) openings, orientation and floor area are approximate. No details are guaranteed, they cannot be relied upon for any purpose and do not form part of any agreement. A party must rely upon its own inspection(s). No responsibility is taken for any error, omission, or mis-statement.
Plan produced using PlanUp.